



Dairy Comp Tips & Tricks

Handy Advice for Producers using Dairy Comp SCOUT & 305

ISSUE 6

Send us your ideas and questions about Dairy Comp

The intent of this newsletter is to help you understand the program as it applies to your usage. As mentioned previously, because it contains helpful hints for improving reports or analysis, your suggestions and shortcuts will benefit others. Please provide comments or helpful hints that we can reproduce in future newsletters. Send your comments to Bill Grexton at bgrexton@canwestdhi.com

Regular mail or email - how would you like to receive this newsletter?

Tips & Tricks is currently being mailed to all Dairy Comp users. However, we now have the option of emailing you the newsletter. If you would like to receive your newsletter by email instead of regular mail, please send an email to bgrexton@canwestdhi.com with the subject line "please email me tips and tricks". All future newsletters will then be sent via email and regular mailing will be discontinued.

A New Data Backup Process!

Jeromy Ten Hag, Dairy Comp Software Support

There are new features added to Dairy Comp to make backups of your herd data much easier - particularly if you use a memory stick.

Choose FILE from your main menu, go to GENERAL SETUP, then select the BACKUPS tab. There are two sections to note. In the Automatic Backups section you can control how often auto backups are made, how many are saved, and where they are stored. The settings shown above tell the program to automatically make a backup everyday, and save the last 7 backups made.

If your program is not open everyday, it will make a backup each day the program is open. Since the 'Directory for autobackups' is blank, the backup will be saved in the program folder. You can enter an alternate save location, like a memory stick drive letter. Having backups of your data saved off the hard drive is a great idea, in case a hard drive crash occurs.

In the Daily Backups section. Click on **Use Internal Backup** (see menu screen to the right). This will use an internal process to make backups. When Daily Backup is chosen from the menu, and a Normal Backup is done, the SAVE AS screen appears and you can select any folder, EXCEPT THE PROGRAM FOLDER. It will remember the last save location and automatically put that location in the directory for daily backups slot.

Key program files will be saved with this new setup. However, the 'optional' box below allows you to specify any other files that need to be included in the backup. I would suggest including the

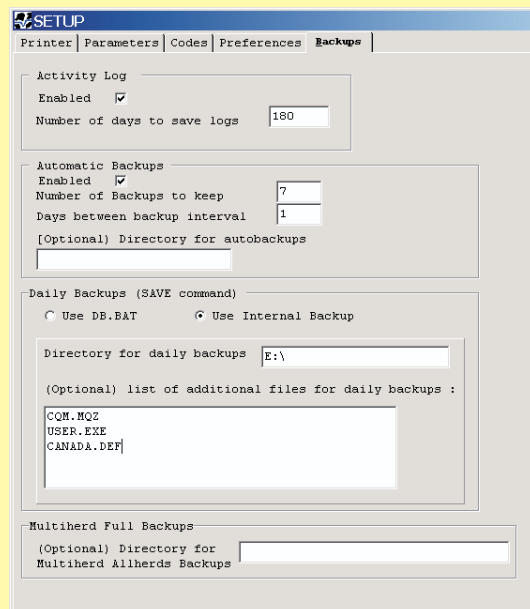


Figure 1

CQM.MQZ (CQM info file), USER.EXE, CANADA.DEF (e-reg settings) and possibly the *.BMP file.

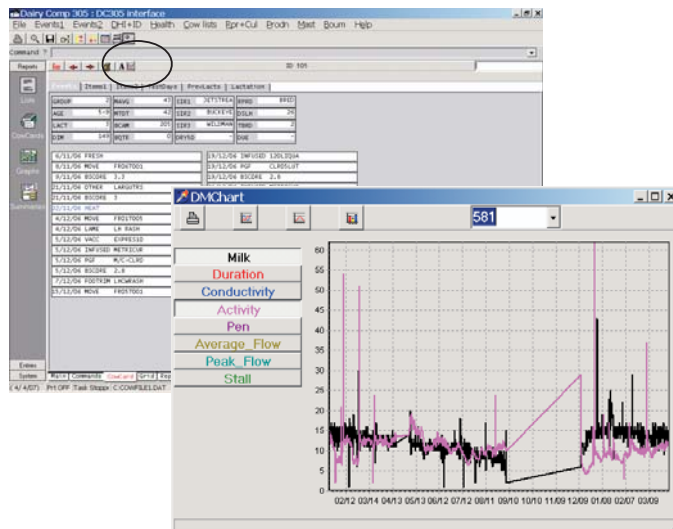
These backup options are more flexible, and will be much easier to support with a user or DHI staff on farm. If you have any questions, feel free to contact Dairy Comp Support.

Looking at Parlor Information for Individual Cows

Jeromy Ten Hag, Dairy Comp Software Support

For users that have Dairy Comp linked to a parlor system, there are graphing features available to show individual cow data collected from the parlor over time. If you go into a cowcard, a small icon, looking like a graph, will open a second screen (see right). You will be able to graph different parameters as shown in the left hand column.

These parameters are graphed over time as shown by the horizontal axis. There is no time limit to this graph, it will graph all data for that cow until she leaves the herd. To zoom in on a particular time frame, all you need to do is drag your mouse over top the area you want. You will notice that the time axis will change. To get the full graph back, drag your mouse from the bottom right corner towards the upper left corner. This data can be useful when looking at issues with specific animals. Looking at milk production for sick cows or at activity information for cows that behave like they are cystic may be useful.



Have You Tried This?

Dairy Comp programs are being used more to manage the injection schedules in synchronized breeding programs. As a safety feature, you can not enroll any cow that is recorded as bred or pregnant into the program. **If you are manually adding cows to an Ovsynch schedule, make sure she is marked open to the previous breeding so she appears on the Ovsynch list.** No warning will appear when you select a bred or pregnant cow - the cow will not be added to the list.

In Dairy Comp 305, we can alter the **Manual Enroll to Ovsynch** command by adding a **\k for rc=2-3** at the end of the command. This will inform you that **cow x does not meet the condition criteria** when a bred, pregnant or dry cow is selected. This is a good reminder that the cow cannot be enrolled to a synch program.

Did You Know?

A video CD is available at no charge for SCOUT users that shows how to deal with the nine key functions of SCOUT.

1. Changing Herd Parameters
2. Using Report Changer to alter reports
3. Capturing Johne's Information
4. Setting up Ovsynch protocols
5. Using the Monitor report
6. Editing and using Sire List
7. How to use Electronic registration
8. Entering Health Events for CQM
9. CQM Recording/Reporting

If you would like a CD, please talk to your Dairy Comp contact, or call Bill Grexton at (519) 824-2320 ext. 254.

Make sure NLID is entered!

Sharon Cousens-Bond, Communications and Customer Service

If you transfer a cow into your herd and she has existing production records elsewhere, it is important to enter the Registration Number or NLID Number and the correct Entry Date (Edat) so that it is part of the data that is automatically transferred from the original herd **after the cow's first test** on your farm.

If you add the Registration Number or NLID Number at a later date, this will result in an error occurring at the processing center saying that the Registration or NLID Number exists on another farm. DHI Editors must then go through a manual process of transferring of these animals and previous and past test day information to your farm. This correction takes time, particularly if there are multiple animals involved, and it may delay the processing of your test reports.

Making sure you have the correct Registration or NLID number and 'Enter herd date' prior to the first test day of the transferred cow's in your herd, will prevent any delay in processing from occurring.