



# Dairy Comp TIPS & TRICKS

Handy Advice for Producers using Dairy Comp SCOUT and 305

ISSUE 3

## Send us your ideas and questions about Dairy Comp

The intent of this newsletter is to help you understand the program as it applies to your usage. This newsletter will contain helpful hints for improving reports or analysis features of your program, as well as some current herd management information. **Please provide comments or helpful hints of your own that we can reproduce in future newsletters. Send it to Bill Grexton at [bgrexton@canwestdhi.com](mailto:bgrexton@canwestdhi.com)**

## Entering Crossbred Information

Ian Rumbles, Product Development

Here are some tips on entering information for crossbred animals:

### Breeding Information

When entering a breeding, you are prompted to add a sire to the cowfile, use the following guideline.

- Enter the Sire's Short Name (e.g. OLSTAD)
- When prompted for NAAB or REG # - Enter the Semen Code (e.g. 252N5654) NOTE: Do not use the registration number (e.g. NOR5583).

*(See list of Norwegian Red bulls in the next column.)*

### Correcting Sire Information

It is VERY IMPORTANT to make sure that the sire information is correct in Scout and Dairy Comp. Enter the short name and the Semen Code (e.g. BRENDEN 252N5694). Any sires entered differently need to be corrected.

Do not use the Semex AI code (e.g. 200), or enter just the number on the vial (e.g. 5694). Both will cause problems.

To correct an existing sire, go to Sires and select Change Sire Name. From the list of sires, select the sire and make the necessary change

Once a Sire has been corrected in the Sire List all of the associated breedings and animal sire information will be correct.

DO NOT delete a sire and add it again.

### Entering Calving Information

When entering the Fresh event, make sure the birth date is correct. (NOTE: There is some indication that the gestation period for Norwegian Reds is less than Holsteins). NOTE: All Norwegian Red calves must be registered with Holstein Canada and receive a NLID tag.

The sires being used in the Norwegian Red Two Plus trial are:

Short Name	Registration	Semen Code	Birth Date
BERGE	NORM5706	252N5706	17-NOV-1999
BRENDEN	NORM5694	252N5694	24-OCT-1999
ELVEVOLL	NORM5621	252N5621	8-JUN-1999
OLSTAD	NORM5654	252N5654	23-AUG-1999
SALTE	NORM5583	252N5583	15-DEC-1998
SVARSTAD	NORM5522	252N5522	17-AUG-1998

### Calf Registration

Registration can be done using the paper registration application, or using the Electronic Registration Application (ERA) available in the Dairy Comp 305 or SCOUT program, or from the DHI field staff.

### NOTE:

- Animals will be registered at Holstein Canada. Currently, Registration Certificates coming from Holstein Canada will indicate all non-Holstein animals as Unknown. Holstein Canada is in the process of updating their software to accept non-Holstein animals. After their update is complete they will be reissuing the Registration Certificates with the correct sire information.
- Since the Dairy Comp products will not update Sire information with a blank, the Sire information will remain on the Cow Card.
- If registering animals using paper applications use the Sire Information indicated above.

### When entering the calf information in SCOUT or Dairy Comp

- Make sure that the breed is indicated as H=Holstein. The breed will default to the same as the Dam.
- Use the Sire Semen code when entering the sire information. DO NOT use the Registration Number. If the Semen Code is used, the Sire information will cross reference correctly and be submitted to Holstein Canada.

**No Dairy Comp 305 events are planned for this fall but a brochure will be available shortly outlining our winter herd management programs.**

## Helpful Hints: Changing Cow Card Items

Bill Grexton, Herd Management Services

You are in control of what items appear on your cow card. You can customize the Cow Card to show the information you want to see on each cow card. If you want to add or delete an item from your cow card, it is a simple process. Once you make the change in 1 cow card it applies to ALL cow cards. Here is how to accomplish it.

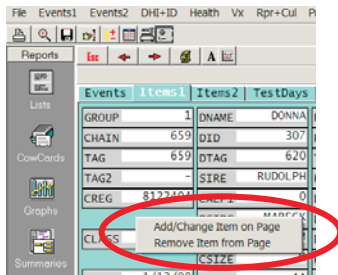


Figure A

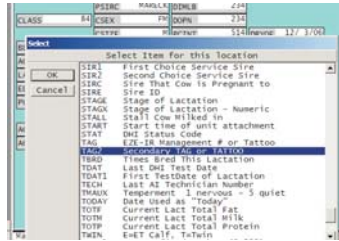


Figure B

To remove an item RIGHT click on the box the item is in and the prompt (Figure A), appears. Select Remove Item from Page. You will be prompted Yes or No. Choose Yes. The item is deleted.

To add or change an item, select the item you wish to change or the empty space you wish to add the new item into. Right Click. Now select Add/Change Item on Page. An item list will appear (Figure B). Choose which item you wish to add to the card in that spot and click OK. The item is now added or changed.

## Adding Johne's Results to Your Cow Card

Jeremy Ten Hag, Dairy Comp Software Support

The Johne's testing service that Canwest DHI provides, gives you and your veterinarian information that can be used in the management of the herd. Having the Johne's test results available in your Dairy COMP program will allow you to make better use of the information.

In Dairy COMP 305, information like Johne's test date, the numerical result and a POS or NEG status result can be filed in quite easily after a few new items are created. In SCOUT we can use one of CODA, TAG2 or USER1 items to store Johne's results. The results would need to be typed into each cowcard. With Scout or DC305 you can add the item box to your cow card (see article above) and then just double click on the box to add the result for each cow. DC305 has the ability to electronically file the information in. In either case, you should call Dairy COMP support for assistance with setting up your program to load your Johne's testing information.

Entering cows that have had a positive or negative test will help denote cows that have been tested, and help you create lists of eligible animals for future screening tests. Having a Johne's status item on your due list can easily highlight which calves are from Johne's positive cows which will need colostrum from a cow with a negative status. Report changer in Scout or Alter with DC305 will allow you to add this item to the report.

Make sure you consult your veterinarian when interpreting Johne's test results and developing Johne's prevention strategies.

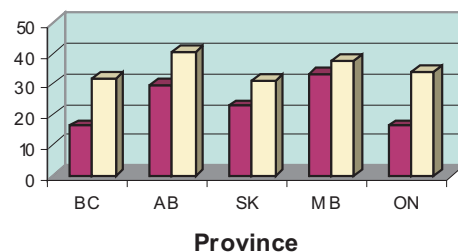
## Who uses Dairy Comp 305?

Bill Grexton, Herd Management Services

More herds are using Dairy Comp products than ever before. Since our launch in Canada in 1997, we now have over 625 herds using Dairy Comp products every day as a management tool. In addition to that over 30% of herds are downloaded each month by farm advisors so that they can use the data to provide added value to their customers.

Below is a comparison of herds using Dairy Comp software with provincial averages. Clearly, larger and better managed herds use the software to make better decisions.

% of Cows Managed by Dairy COMP Products  
July 2006



■ By Producers with DC/SCOUT □ By Advisors with DC

Province	Users of Dairy Comp Products		Provincial Averages	
	Average # of Cows	BCAM	Average # Cows	BCAM
British Columbia Average	162	223	120	205
Alberta Average	141	216	113	191
Saskatchewan Average	172	210	116	186
Manitoba Average	192	204	105	175
Ontario Average	112	213	65	180