

IN THIS ISSUE:

- “Bulk Tank Report”
- “Managing NLID tag numbers”
- “Emailing Reports”

PAST ISSUES ▶



Monitoring Implementation of a Management Plan

DairyComp has many different ways of analyzing performance measures in different dairy management areas. DairyComp can show how things are going right now, or can look at herd information over time to identify trends in performance.

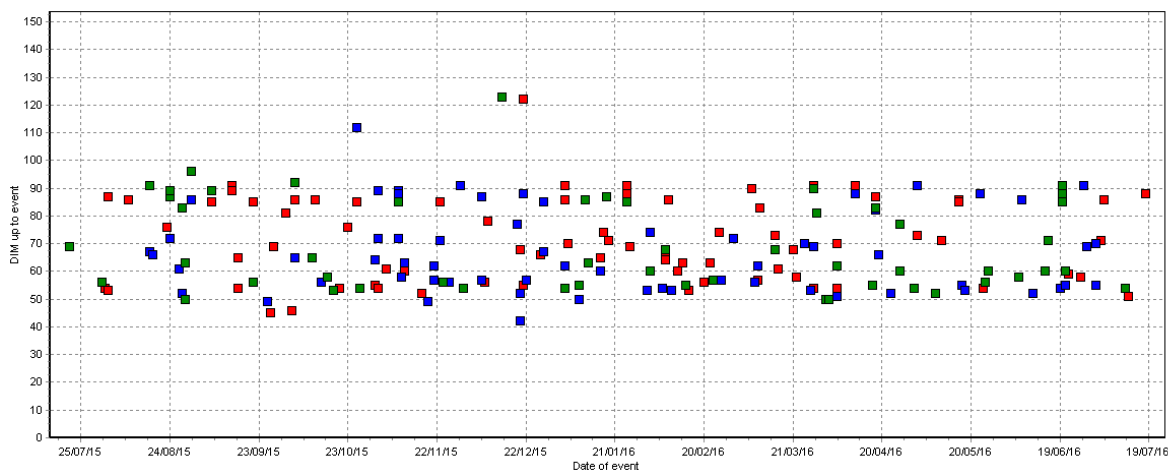
Another way we can use DairyComp data monitoring tools is to look at the implementation of the herd management plans or strategies to see if the plans are being followed and if they are being carried out consistently. The GUIDE module in DairyComp 305 contains many graphs or reports that can help with determining how management plans are carried out. For example, under the Reproduction tab, click on the questions noted with the arrows below:

[Data Checks](#) | [Overview](#) | [Reproduction](#) | [Transition](#) | [Mastitis](#) | [Production](#) | [Lameness](#) | [Parlor](#) | [Replacements](#) | [Misc](#)

Reproduction

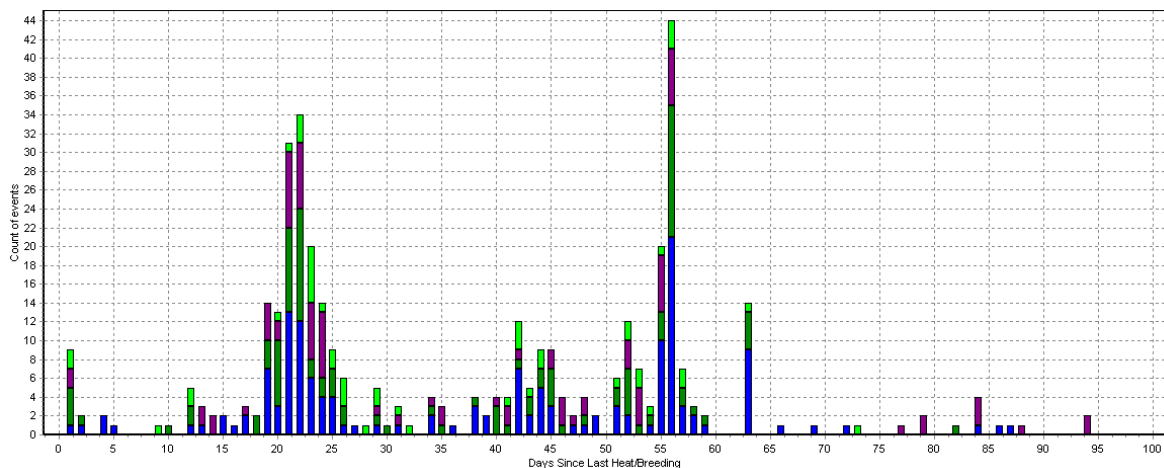
- Animals in Potential Need of Attention
 - What cows may need insemination?
 - What are the DIM for cows needing insemination?
 - What cows may need pregnancy confirmation?
- Insemination Activity and Actual Pattern at Inseminations versus Planned Pattern
 - Has the weekly insemination activity been sufficiently high and consistent?
 - Has the recent daily insemination activity by day been sufficiently high?
 - Does the actual DIM at the first inseminations match the stated VWP?
 - Does the actual pattern of the first inseminations match the stated VWP?
 - Does the actual DIM at the first 3 inseminations match the stated plan?
 - Are open animals being reinseminated in a timely manner for services 2-5?
 - Does the actual pattern of insemination at the first 3 services match the stated plan?
 - Has the insemination intensity been sufficiently high by 21 day calendar intervals?

The graph below can show when cows start to be inseminated for the first time and how long it takes before all cows are bred for the first time in lactation.



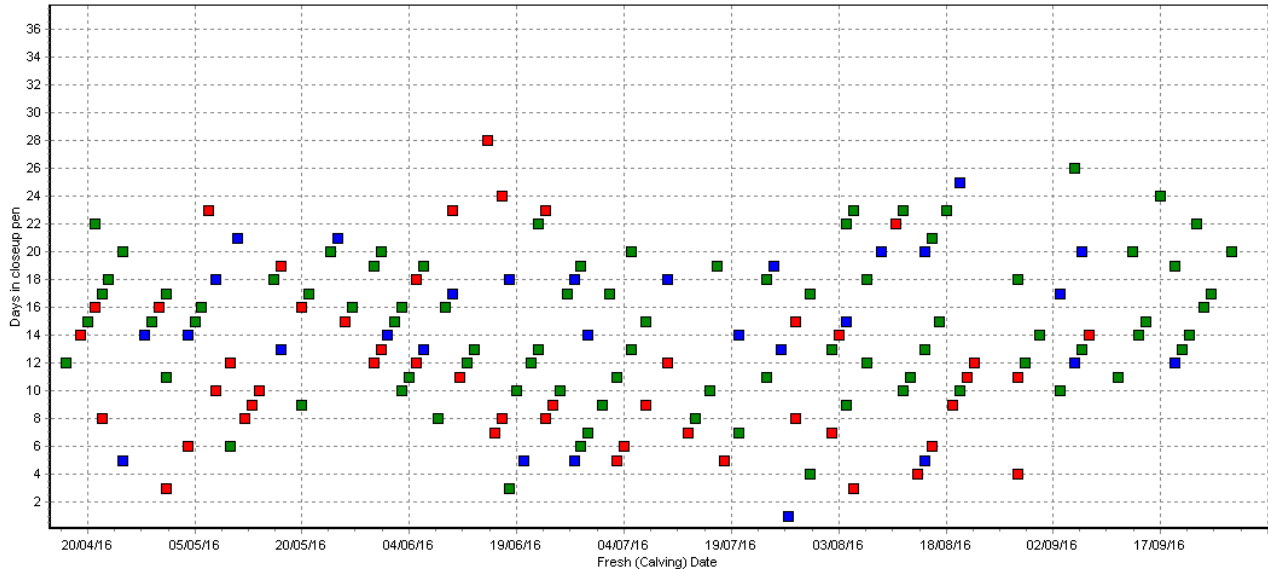
The graph below can quickly display the timeliness of getting open cows rebred for services 2-5.

This particular herd has a large of re-inseminations at around 21 days after the previous service and then another significant of re-inseminations at about 52-55 days after the previous service. Is this intended, are their opportunities to modify the herd's plan for finding open cows and getting them re-inseminated?



Another opportunity to monitoring a herd's stated plan is to look at the days spent in the close up prior to calving. DairyComp 305 will need to be setup with pens definitions and entries need to be made when animals are physically moved to close-up.

The graph on page 3 shows how many days that animals which have freshened in the last 180 days are in the close-up pen. Each square on the graph below represents an animal moved to close up and the squares are color coded to indicate the lactation group those animals are in.



With DairyComp 305 setup and the move dates entered, you will be able to monitor quickly if your plan is being followed and help understand whether there are opportunities to work on improving your transition cow plan which is so important for any dairy. Call the DairyComp support team to help you setup your close-up pen and related items so you can monitor this management area on your dairy.

Bulk Tank Report

Analyzing 171 cows on Test Date 28/ 4/15

```

|-- Bulk Tank Today --|
Total Milk           6201
Average Milk         36
Bulk PctF            3.48
Bulk PctP            3.23

|----- Current Settings -----|
Milk price           0.00
Fat Base             0.0  Diff 0.00
Ptn Base             0.0  Diff 0.00
SCC Premiums undefined or not present
  
```

```

Without any cows removed :
Bulk Tank SCC        172
Pay Price            0.00
Daily Income         0
  
```

ID	PSCC	s>4	MILK	Value	SCC	%Tank	Bulk Tank after removing only this cow from tank	Bulk Tank after removing cow and all cows above it
1355	0	4	53	0.00	2455	12.2	0.00 152	0.00 152
1384	0	3	32	0.00	3547	10.6	0.00 154	0.00 134
1342	0	6	53	0.00	1945	9.6	0.00 157	0.00 119
1451	602	5	45	0.00	1405	5.9	0.00 163	0.00 109
1049	0	2	41	0.00	1331	5.1	0.00 164	0.00 101
1475	0	5	38	0.00	824	2.9	0.00 168	0.00 96
1374	0	3	27	0.00	1054	2.7	0.00 168	0.00 92
1309	1001	4	65	0.00	393	2.4	0.00 170	0.00 88
1522	0	3	33	0.00	646	2.0	0.00 169	0.00 85
1086	0	1	49	0.00	423	1.9	0.00 170	0.00 82
1117	0	2	41	0.00	500	1.9	0.00 170	0.00 79
1608	89	1	30	0.00	553	1.6	0.00 170	0.00 77
1358	663	6	31	0.00	487	1.4	0.00 170	0.00 75
1806	0	6	37	0.00	398	1.4	0.00 171	0.00 72
1493	0	1	40	0.00	357	1.3	0.00 171	0.00 70
1370	0	2	54	0.00	255	1.3	0.00 171	0.00 69

The **Bulk Tank Report** is a useful test day summary and valuable tool to find high contributing cows to the SCC herd average. Sometimes it takes just a few bad apples with increased SCC to raise the average herd SCC.

For SCOUT users, go to the **MAST** menu – **BulkTank SCC Analysis**

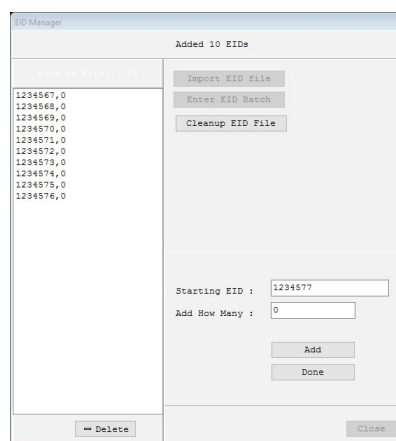
For DairyComp 305 users, see **Testday Rpts** menu – **BulkTank SCC Analysis** or type **TANK** on the command line. The Command **TANK\P** will allow you to view previous months.

The top section of the report summarizes how many cows were sampled on test day and provides total milk produced, averages for milk\cow, fat and

protein percentage, and SCC. The tank report will display SCC and component values using individual cow data that is weighted on milk produced on test day to more closely represent bulk tank values.

This report indicates the impact of individual cow's SCC on the herd's weighted average SCC. The contribution is a weighted percentage, meaning the volume of milk and SCC is taken into consideration. The middle column indicates how the Bulk Tank SCC will change if only an individual cow is removed from the tank (A), and the last section indicates how the Bulk Tank SCC will change if a cow and all cows above it are removed (B). For example, in the report below cow #1355 has a lower SCC (2,455,000), contributing 12.2% SCC to the bulk tank due to higher production (53 kg) than cow #1384 (SCC 3,547,000; milk 32kg; SCC contribution 10.6%).

Managing NLID Tag Numbers



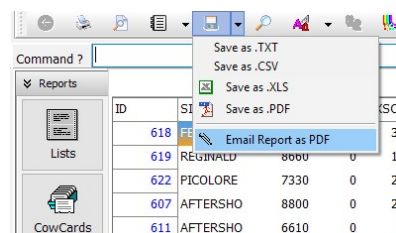
Are you typing out the complete tag number every time a calf is born? There is a quicker way! **EID Manager** allows us to enter an entire batch of tags and reduce the risk of data entry error. To access in SCOUT and DairyComp, go to **FILE > ALTER** and select **EID Manager**.

To enter a batch of tags, select **ENTER EID BATCH** and a prompt for the **Starting EID** number will appear to type the starting tag number. In the **Add How Many** box, enter the number of tags that are in the batch and click on **Add**. It is not necessary to add the starting "1240000...."; just the ending of the tag number can be added.

A warning will appear stating "Starting EID is not valid, continue anyway?" and select YES to bypass this. Now when entering a new heifer calf, the box of tag numbers will appear and we will then be able to pick the tag number associated with the next calf.

If a tag number(s) needs to be deleted, highlight the number(s) and click on **Delete**. The **Cleanup EID File** button will remove any tag numbers that are already in use in your herd.

New Feature: Emailing Reports from DairyComp & SCOUT



There is a new feature that allows you to email a report or list straight from your program when internet access is available. This will allow you to print the report at another location or open it on your smart phone or tablet for offline access.

To find this, run the selected report and click on the **SAVE** icon drop-down arrow. Choose **"Email report as pdf"** and enter an email address.

Take your DairyComp software to the next level with Pocket CowCard.

Pocket CowCard software gives you instant access to all your Dairy Comp information via a handheld device, Android phone, or tablet. With its user-friendly navigation, **Pocket CowCard** makes it easy to look up individual animal information, access management lists, enter data, and scan RFID tags.

For more information on Pocket CowCard, contact DHI today.

