

DairyComp Tips & Tricks

SEPTEMBER 2016

PLEASE NOTE! This is our last mailed version of the Tips & Tricks newsletter. In the future, Tips & Tricks will be available only online at canwestdhi.com, or by email.

Using DairyComp to Monitor Herd Production

Summaries in DairyComp allow users to look at herd data in different groups and sub groups which you can choose. A great example of this is the **Test Day Summary** report that is available in DairyComp 305 or SCOUT.

For SCOUT users, see **PRODN – Test Day Summary**.

For DairyComp 305 users, **Testday Summary 1** will be under your **Prod** or **Test Day Reports** menu or you can run **TDSUM1** on the command line. A report, similar to below, will appear.



PCTP = protein %
SCC = somatic cell count
MUN = milk urea nitrogen

This report gives a snapshot of how cows are performing in terms of milk volume, milk components, and udder health. By looking at subgroups, it allows you to pick out areas worthy of more attention quickly.

You can click on any group label on the left side of the report to get a list of the cows that make up that particular sub-group to see the numbers that make up the sub-group average values.

Based on information gleaned from this report you can do further analysis using the **GUIDE**, **EGRAPH** or **EVENTS** modules which we will discuss in more detail in future newsletters.

Also consider that this report can be modified in DairyComp 305 using ALTER to possibly include, LS (linear score), LS1 (linear score at first test) or maybe PEAK.

For those users that have DairyComp 305 linked to a milking system, you can use this summary to report on daily milk production in addition to test day production.

By	STAGE	Pct	Count	AvDIMTD	Av MILK	Av PCTF	Av PCTP	Av SCC	Av MUN
	FRESH	21	6	26	36	3.8	3.0	29	7.3
	EARLY	29	8	76	40	3.4	3.0	63	11.1
	MID	14	4	145	36	3.4	3.2	27	10.2
	LATE	29	8	253	37	3.5	3.2	81	9.5
	OVER305	7	2	382	32	4.0	3.2	166	15.5
	LCTGP 1	28	28	147	37	3.6	3.1	63	10.0
By	STAGE	Pct	Count	AvDIMTD	Av MILK	Av PCTF	Av PCTP	Av SCC	Av MUN
	FRESH	10	3	27	38	3.3	3.1	95	10.7
	EARLY	23	7	64	46	3.3	3.1	33	10.3
	MID	16	5	160	40	3.2	3.2	267	8.4
	LATE	42	13	253	36	3.6	3.2	117	12.3
	OVER305	10	3	339	34	3.5	3.3	218	11.0
	LCTGP 2	31	31	182	39	3.4	3.2	130	10.9
By	STAGE	Pct	Count	AvDIMTD	Av MILK	Av PCTF	Av PCTP	Av SCC	Av MUN
	FRESH	15	6	20	38	3.8	3.2	30	9.0
	EARLY	17	7	63	47	3.5	3.0	364	11.3
	MID	27	11	156	38	3.3	3.1	777	13.6
	LATE	32	13	250	34	3.4	3.3	324	10.4
	OVER305	10	4	361	32	3.8	3.4	96	10.0
	LCTGP 3	41	41	170	38	3.5	3.2	387	11.2
By	STAGE	Pct	Count	AvDIMTD	Av MILK	Av PCTF	Av PCTP	Av SCC	Av MUN
	FRESH	15	15	24	37	3.7	3.1	42	8.7
	EARLY	22	22	68	44	3.4	3.0	149	10.9
	MID	20	20	154	38	3.3	3.1	499	11.6
	LATE	34	34	252	36	3.5	3.2	188	10.9
	OVER305	9	9	358	33	3.8	3.3	152	11.6
Total		100	100	167	38	3.5	3.2	217	10.8

You will notice that the following parameters are broken down by the stage of lactation within the three lactation groups and averaged across the entire milking herd at the bottom of the summary report.

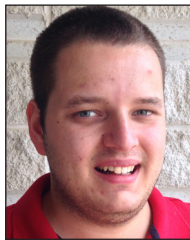
DIMTD = DIM on testday
MILK = milk produced on test day (kg/day)
PCTF = fat %

New DHI Staff Additions!



Bryan Quanbury joined CanWest DHI in February 2016 as District Manager for West Central Ontario covering Bruce, Dufferin, Halton, Huron, Grey, Peel, Perth, Simcoe, Waterloo, and Wellington counties. He brings a wealth of experience in the dairy industry that will serve him

well in his role. Bryan is responsible for managing field staff and is also involved in the sales and support of DHI products including DairyComp.



Frank van Lith joined the DairyComp Sales and Support team in June 2016. Frank is a recent University of Guelph graduate where he majored in Agriculture Business. Frank brings with him great practical knowledge of dairy production and an array of skills gained through his education and work experience on the family dairy farm.



Carlos Romero started with DairyComp Sales & Support in June 2016 and brings a unique skill set to the team. He has a wide range of skills related to customer service pertaining to software, databases and troubleshooting issues. Carlos has been a part of different teams over the

years, developing great people and leadership skills that will benefit both our team and customers. His ability to speak French will also help us better serve our software customers in eastern Ontario and Quebec.

**Get the most out of your program!
Watch for upcoming DairyComp
training sessions starting this fall.**

New! PRO\$ Now in DairyComp 305

Pro\$ is a genetic selection tool that maximizes genetic response for cow profitability. Selection for Pro\$ will lead to a herd that excels for production, is long-lasting and has a level of conformation that supports these two characteristics. Pro\$ is expressed in dollars and is one of Canada's two national selection indexes along with LPI.

Pro\$

The backbone of this profit-based index is on-farm DHI data. Pro\$ is based on sound science and takes current economic values into account for the calculation of

expenses, income and overall daughter profitability. If the main goal is milk sales, using Pro\$ as your primary selection index will lead to a highly profitable herd (CDN, 2015).

Pro\$ can now be loaded into DairyComp 305 with your DHI test day results, and is stored in the item PRO\$. This is a valuable genetic selection tool that is a welcome addition to the DairyComp 305 program. Run a DairyComp 305 web update to get the latest version. The PRO\$ item will be auto-created and populated when test day results are loaded. PRO\$ is only available in DairyComp 305, not in SCOUT.



A reminder on info available in DairyComp 305 & SCOUT

A reminder that Lifetime Profit Index (LPI) and Milk Pregnancy Test Results are available to load into DairyComp 305 and SCOUT after test day. The LPI item (PI item in Scout) can be added to cowcards and reports, which can be used to rank cows and heifers by their LPI value. Milk Pregnancy Test load in OPEN, PREG and OK results and update the repro status of those cows. OK results indicate a pregnant animal is still pregnant. RECHECK (inconclusive) results will NOT BE LOADED and will be available on the DHI reports (paper, email, etc.). Consider using "Add cow to vet list" option to have these cows checked on the next vet visit.

Does your expected DRY OFF date reflect your herd goal in what is reported in your DairyComp 305 or SCOUT program? This can be customized so Cows Due to Dry report accurately indicates who should be dried off at the correct days carried calf. The item in SCOUT is called DRYOF and in DairyComp 305 it is called DRYxx (xx=current value e.g. DRY60). Call DairyComp Support if help is needed to customize your program to meet your needs.

Questions on DairyComp? Please call our support team at 1-800-549-4373.