

GEA



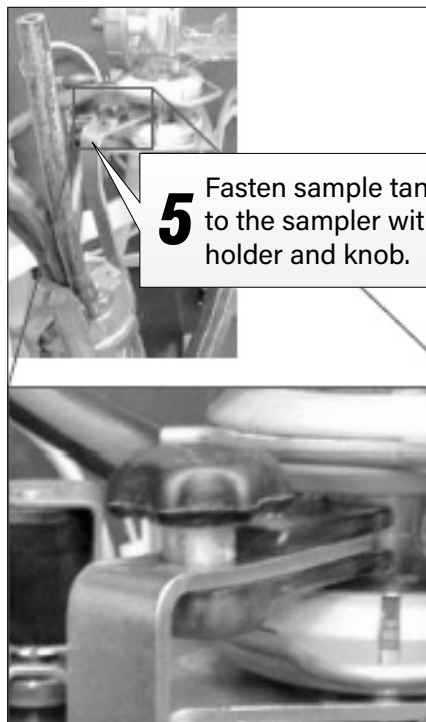
CHECK LIST FOR ALL MAKES OF ROBOTS

- First time start-up settings done?
- Is sampler level?
- Is the milk line connected?
- Is air pressure to the shuttle correct?
- Are there enough bottles in the rack?
- Is spoon set in Position 1? End position should be number 119.
- If there is more than 1 robot, are the racks numbered accordingly (i.e. 1,2,3,4)?
- Is the rack type correct (i.e. 60 bottle)?
- After the first sample is taken, is there the proper amount of milk in the bottle?
- Is the robot off Pause?

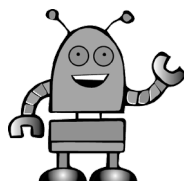


Robot Settings

1 Pause Robot

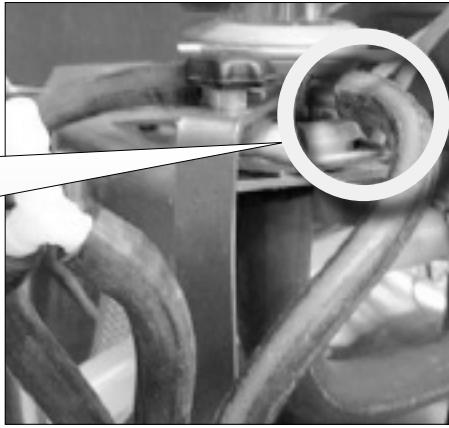


5 Fasten sample tank to the sampler with holder and knob.



The hose and intake tube from the cover must end at the lowest point in the sample tank.

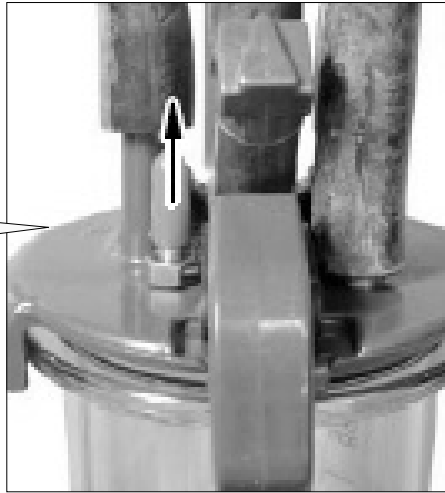
6 Connect the hose from the sample tank to the right-hand connector on the sampler



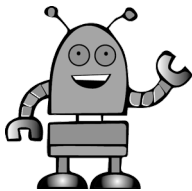
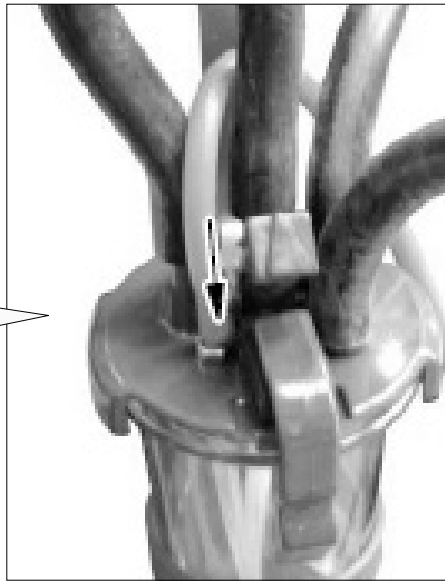
7 Connect the hose from the left-hand connector on the sampler to the Y-connector on the sampler.



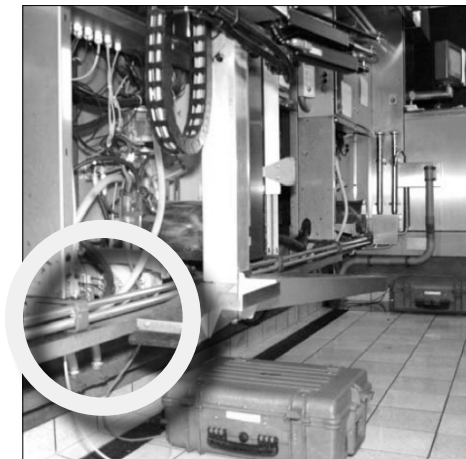
8 Remove the cap from the sampler cover



9 Connect the sampling tube on the sampling device to the sample tank.



Let's get the kinks out! Make sure hoses run behind rail.



GEA DairyPlan C21

Feed To-Do Today Equip Monitoring CQM SOP's Young

1 Select Milk Info

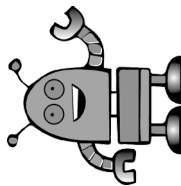
- Milk Info
- DHI Test
- DHI Reference
- Milk Production
- Milk Production w/Options
- Actual milk yield versus stage of lactation
- Conductivity or Milk Alarm last 24 Hours
- Slow Milking Cows
- Milk Deviation by Percentage
- Cows not increasing production
- Cows with Low Milk
- Cows Under 15 Kg Of Milk
- Milk Flow - Individual
- Cows with More than 45KG
- Manual Detached Cows
- Milk Evaluation by Lact No.
- Fresh Cows 0-60 DIM
- Production 30-60 DIM
- Average Milk Weights
- Lactation Milk
- Peak Milk Production
- Daily Milk Weights Last 42 days.rfa

2 Select

3 Use this milk weight

TIP: Click File and set this screen as a desktop icon

	Last Actual 24 Hour Milk	Average Milk for Last 3 Days	Average Milk for Last 7 Days	Average Milk for Last 14 Days
Total	45.8	47.5	48.7	46.4
160	20.7	23.3	24.4	24.8
261	31.7	30.4	26.2	26.2
284	9.2	8.9	10.7	13.2
302	44.7	41.9	43.2	42.7
325	34.8	33.8	32.4	28.3
333	33.4	33.1	32.3	33.1
340	39.7	36.8	37.9	38.3
342	31.0	31.0	29.5	27.8
344	35.9	38.3	38.4	38.5
355	39.2	43.5	46.8	47.3
364	32.9	35.6	37.4	39.6
368	41.6	43.9	42.2	43.4
380	36.8	40.5	39.3	40.1
386	22.1	25.9	25.6	25.7
387	49.2	50.9	50.6	51.1
388	18.9	14.2	10.4	10.4
393	16.4	15.9	19.4	21.2
396	34.8	32.5	34.1	34.4
411				



Good news! You only need to do this step once.

DairyPlan C21

Version 5.2

4 Select

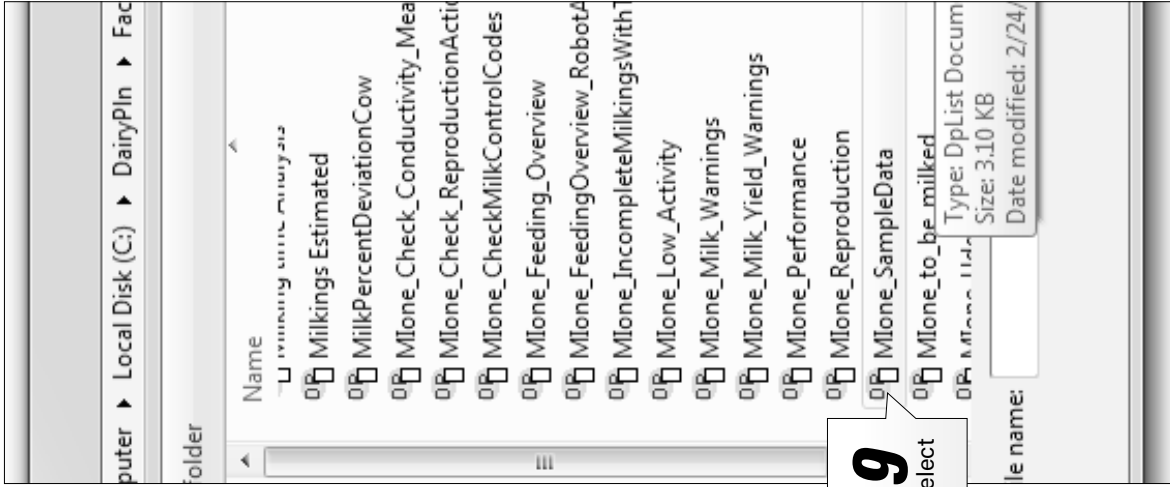
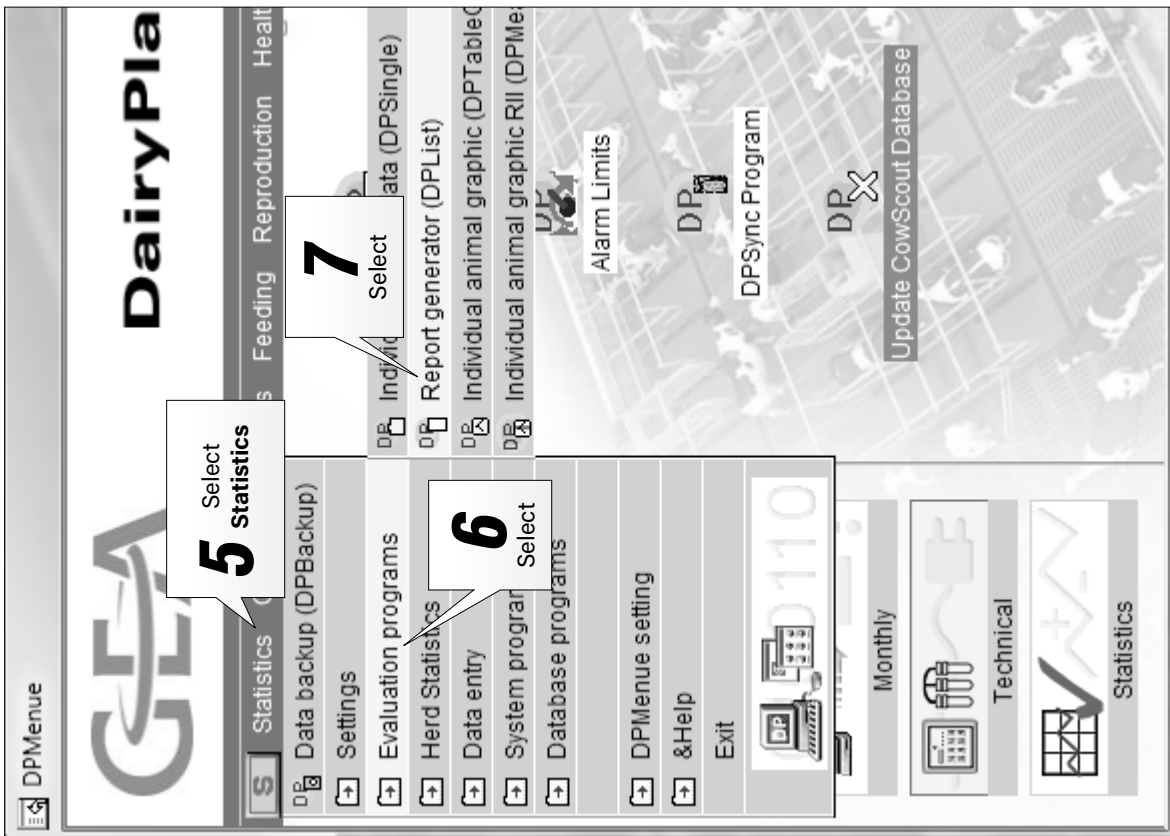
DPMenu	
CA-Menu	
CA-Menu2	✓
CS Menu	
Mlone	
NA-Menu	

Milk Info Reproduction Health Feed To-Do Today Equip Monitoring CQM SOP's Youngstock Herd Info

Animal/Measurements
Sire Administration (add, edit, delete)
Repro/Health Entry
Action Batch Entry
Setup Changes
Feeding
Important News 5.2

Data exchange

DPMenu	
CA-Menu	
CA-Menu2	
CS Menu	
Mlone	✓
NA-Menu	



File Edit Design View Window Help
 D Print - (Mone_SampleData)

TIP: Click File and set this screen as a desktop icon

1st Sample Session Date and Time / Letzter Probennahmezeitraum
 The Robot-IPC this data is automatically available from recorded data.
 Herdmanagement-PC please enter date and time period at the left side
 ar. Auf dem Herdenmanagement-PC den Zeitraum bitte links eintragen.

The Robot-IPC sind diese Daten automatisch aus den aufgezeichneten Daten
 ar. Auf dem Herdenmanagement-PC den Zeitraum bitte links eintragen.

Individual milkings with Sample Data
 Einzelgemelksdaten mit Probennummern

Errorcodes: 13 = meter data missing?, 9-12 = incomplete, 18 = kg incomplete,
 20 = Training

Cow	Gp	State	M.box	Date	Time	kg	Sample	Box Number	Errorcode
490	4	Ready	1	23-02-16	14:39	14.06	1	1	0
388	4	Bred	1	23-02-16	14:51	13.69	1	2	0
325	4	Bred	1	23-02-16	15:01	19.87	1	3	0
517	3	Preg	1	23-02-16	15:07	9.34	1	4	0
530	4	Preg	1	23-02-16					0
521	3	Preg	1	23-02-16					0
6639	1	Bred	1	23-02-16					17
3214	3	Bred	1	23-02-16					14
7069	4	Bred	1	23-02-16					0
532	4	Bred	1	23-02-16	15:57	15.75	1	10	0

You can change dates according to your sample date.

Sampling Begin Date: 23/2/16 and Time: 12:00
 End Date: 24/2/16 and Time: 8:55

For Help, press F1

9:55 AM 3/14/16

